

名称：PCG03 快速操作指南
 尺寸：折后尺寸148mm*119mm
 材质：105克铜版纸双面彩色印刷

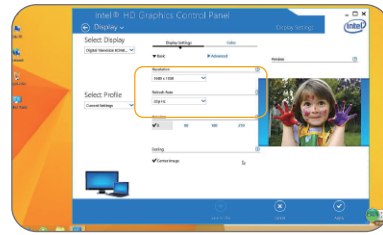
4 Connect to HDTV / Monitor

4.1 Connection

Adjusting the resolution of video output via HDMI / VGA to HDTV or Monitor

Follow the steps below to adjust the video output when connecting the MeLE PCG03 to a HDTV or monitor via HDMI/ VGA

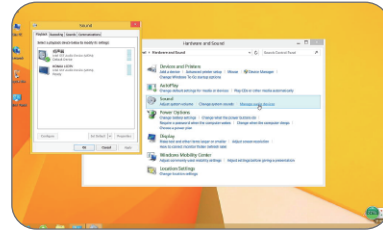
1. Press right key of mouse and choose Graphics Properties .
2. Double click Display.
3. Choose the correct "resolution" and "Refresh Rate" to adjust to correct display on TV.



Configuring audio output via an HDMI device or Audio digital devices

Follow the steps below to enable audio output when connecting the MeLE PCG03 to a TV or audio digital devices via HDMI or 3.5mm stereo jack.

1. Access the Sound settings via the system Control Panel.
2. Under Playback devices, click the display device that corresponds with your HDMI audiocompatible display
3. Click the Set Default button in the lower right hand corner.
4. Click OK to exit the setup.



Service
 E-mail: meleservice@mele.cn
 Web: www.meleshop.com



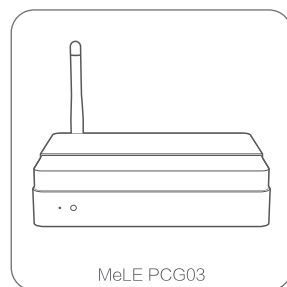
MeLE

PCG03
 mini PC | Quick Start Guide

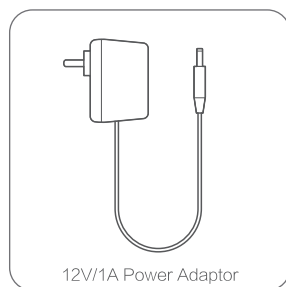
PCG03
 V1.0

1 Package Contents

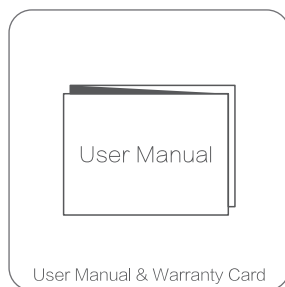
Thanks for Choosing MeLE PCG03!



MeLE PCG03



12V/1A Power Adaptor



User Manual & Warranty Card

2 Products Specification

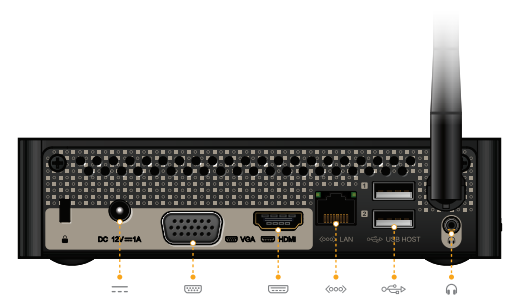
Processor	Intel Atom Z3735F (quad-core, 1.33 GHz) Burst speed up to 1.83 GHz	USB Host	USB 2.0 Host x 3
Graphics Processor	Intel HD Graphics	Networking	10/100Mbps Ethernet
Memory	2GB DDR3L	Wireless Networking	802.11n Wi-Fi Bluetooth 4.0
Storage	32GB eMMC Expandable via SD/SDHC	Operating System	Windows 8.1 with Bing NTE

3 Port Layout

Power LED
 The power LED blinks when the box is powered on.



Power button
SD card reader
USB 2.0 Host x 1



Headphone / Audio / Microphone Out jack
USB 2.0 Host x 2
LAN ports
VGA port
HDMI port
Power input (DC12V)